



## Easy deployment Easy OAM

- RTN 905 based on pizzabox fixed configuration, no need for various module combination, provide one-stop solution for tail site mobile backhaul.
- RTN 905/RTN 950/RTN 950A support USB key startup,plug-and-play operation replace the field software debugging, efficiently decrease the engineering cost
- RTN 950/RTN 950A/RTN980 based on modular design,provide further flexibility for network operation and upgrade.sharing traffic card for investment protection and spare parts management simplicity.
- Coupled with powerful U2000 network management system, support unique configuration and performance monitoring toolkit TP-Assist, be able to provide end-to-end service configuration, OAM operation in real-time.

	RTN 905	RTN 950	RTN 950A	RTN 980
Frequency	6/7/8/10/10.5/11/13/15/18/23/26/28/32/38/42GHz			
Channel Space	3.5/ 7/14/28/40/50/56MHz			
RF Direction	1U/2RF	2U/6RF	2U/6RF	5U/14RF
Switch Capacity	8 Gbps	10 Gbps	10 Gbps	22 Gbps
TDM crossing	Max 4 × 4VC-4	32 × 32VC-4	32 × 32VC-4	128 × 128VC-4
Link Aggregation	2 links	2-4 links	2-4 links	2-4 links
Control Redundancy		●		●
CES E1	○ (Option card)	●	●	●
IEEE 1588v2	●	●	●	●
USB Startup	●	●	●	
L3 VPN		●		
H-QOS	●	●	●	
Enviroment	Temperature: IDU -5°C ~ +60°C; ODU -33°C ~ +55°C; Humidity: IDU5%-95%; ODU 5% -100%			
Power	-38.4 V ~ -72 V			
IDU Weight	2.7kg	5.4kg	5.4kg	15.4kg

Copyright © Huawei Technologies Co., Ltd. 2013. All rights reserved.

No part of this document may be reproduced or transmitted in any form or by any means without prior written consent of Huawei Technologies Co., Ltd.

### Trademark Notice

华为, HUAWEI, and are trademarks or registered trademarks of Huawei Technologies Co., Ltd. Other trademarks, product, service and company names mentioned are the property of their respective owners.

### NO WARRANTY

THE CONTENTS OF THIS MANUAL ARE PROVIDED "AS IS". EXCEPT AS REQUIRED BY APPLICABLE LAWS, NO WARRANTIES OF ANY KIND, EITHER EXPRESS OR IMPLIED, INCLUDING BUT NOT LIMITED TO, THE IMPLIED WARRANTIES OF MERCHANTABILITY AND FITNESS FOR A PARTICULAR PURPOSE,ARE MADE IN RELATION TO THE ACCURACY, RELIABILITY OR CONTENTS OF THIS MANUAL.  
TO THE MAXIMUM EXTENT PERMITTED BY APPLICABLE LAW, IN NO CASE SHALL HUAWEI TECHNOLOGIES CO., LTD BE LIABLE FOR ANY SPECIAL, INCIDENTAL, INDIRECT, OR CONSEQUENTIAL DAMAGES, OR LOST PROFITS, BUSINESS, REVENUE, DATA, GOODWILL OR ANTICIPATED SAVINGS ARISING OUT OF OR IN CONNECTION WITH THE USE OF THIS MANUAL.

**HUAWEI TECHNOLOGIES CO., LTD.**  
Bantian, Longgang District  
Shenzhen518129, P. R. China  
Tel:+86-755-28780808

[www.huawei.com](http://www.huawei.com)

**HUAWEI TECHNOLOGIES CO., LTD.**





## RTN 900

RTN 900 series microwave provide various traffic interface, support unified platform for TDM/Hybrid/Packet microwave and routing function. It owns advantage such as easy configuration, easy installation, naturally coupled with GSM/UMTS/LTE wireless network construction, and oriented for further network evolution.

Optix RTN 900 series products including RTN905/RTN 950/RTN 950A/RTN 980:

### ►RTN 905

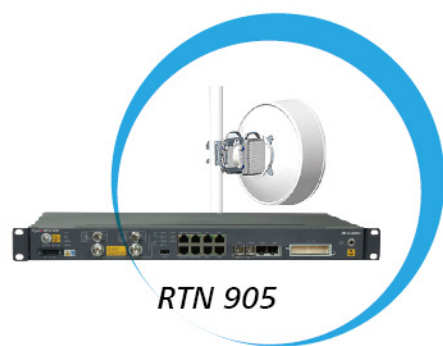
RTN 905 is 1U compacted design pizzabox, support up to 2 RF directions. It located on tail site of mobile backhaul network, directly work with GSM/UMTS/LTE wireless base station with various E1/STM-1\*/FE/GE traffic interfaces.

### ►RTN 950/RTN 950A

RTN 950 and RTN 950A base on modular chassis architecture, support up to 6 RF directions. They locate on aggregation site of mobile backhaul network and focus on dedicated application scenarios: RTN 950 provide higher reliability with control module redundancy, while RTN 950A integrated more traffic interface over single control module, means simplicity of hardware configuration.

### ►RTN 980

RTN 980 is based on the same platform with RTN 950/RTN 950A, sharing most of the modular cards. It locates on the core site of mobile backhaul network, support up to 14 RF directions.



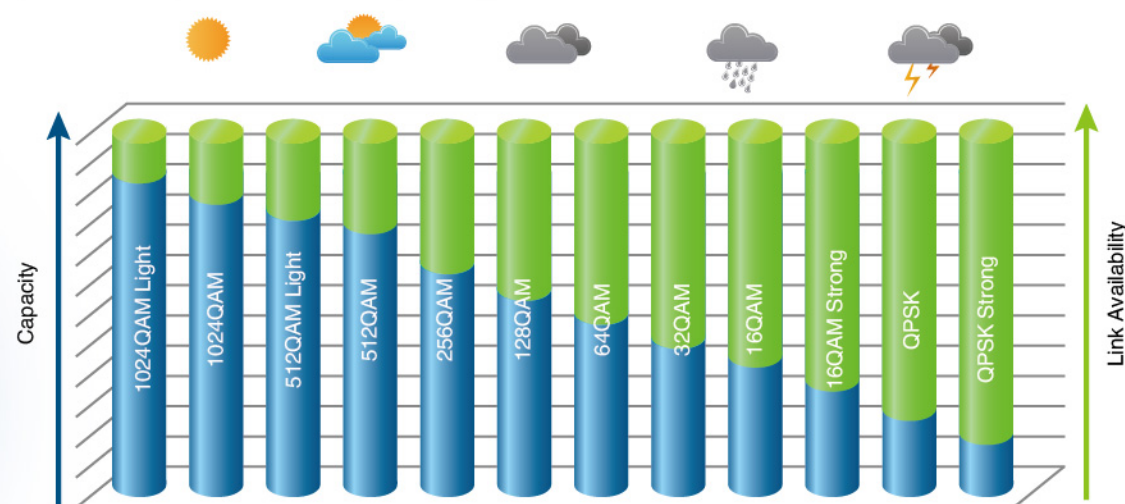
RTN 905

## Ultra-broadband High spectrum efficiency

- Support up to 2Gbps throughput per carrier, ready for continuous network extension
- Support XPIC technology, double bandwidth within same spectrum resource
- Unique 4-Layer Ethernet Frame Header compression, flexible pipe for IP service
- Support 6G~42G full range spectrum and 3.5MHz~56MHz channel space
- Advanced 12-grade hitless adaptive modulation, ensure high availability
- Support up to 1024QAM/1024 QAM Light modulation scheme, provide 5 times capacity flexibility together with hitless AM function, adaptive for various scenario from high spectrum density urban area to rural sparse application.



RTN 950/RTN 950A



Advanced 12-grade hitless modulation

## LTE Oriented Smoothly Upgrade

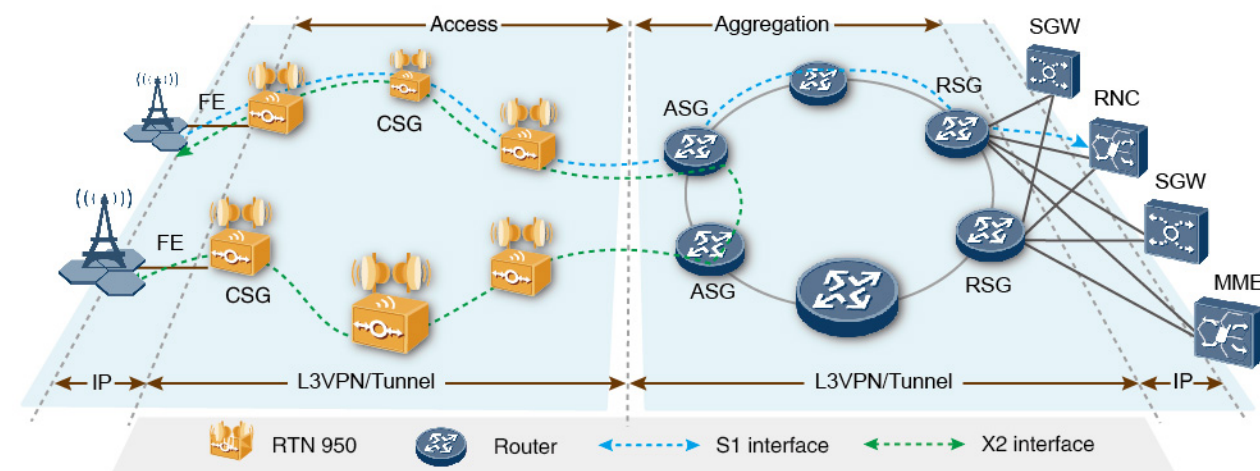
Support various traffic interface, fully adapt to the mobile backhauling requirement by GSM/UMTS/LTE network evolution:

- Support TDM E1, Smart E1(CES E1, IMA E1, ML-PPP E1)
- Support STM-1/STM-4 e/o interface
- Support FE and GE interface
- Support ATM traffic by IMA E1



RTN 980

RTN 950 supports BGP/MPLS-based L3VPN. The figure below shows a typical application of a hierarchical L3VPN bearer network that consists of RTN 950 and Huawei metro routers. Especially for LTE service, L3VPN allows multi-homing of S1 services from eNodeBs and X2 services transmission over the local path.



### High quality Data processing capability

- Support hierarchical QoS(H-QoS) for user-based differential service management
- Up to 4-channel Enhanced physical link aggregation, support load sharing for high level granularity traffic

### Flexible clock synchronization solution

Based on the all IP evolution trend of mobile backhaul network, RTN 900 series product support physical layer clock synchronization, Synchronizaiton Ethernet, IEEE 1588V2 and mature clock protection mechanism